

Biologiske Meddelelser
udgivet af
Det Kongelige Danske Videnskabernes Selskab
Bind **23**, no. 4

Biol. Medd. Dan. Vid. Selsk. **23**, no. 4 (1957)

SOME MARINE ALGAE FROM MAURITIUS

FINAL PART

BY

F. BØRGESEN †

EDITED BY

TYGE CHRISTENSEN



København 1957
i kommission hos Ejnar Munksgaard

DET KONGELIGE DANSKE VIDENSKABERNES SELSKAB udgiver følgende publikationsrækker:

THE ROYAL DANISH ACADEMY OF SCIENCES AND LETTERS issues the following series of publications:

Bibliographical Abbreviation

Oversigt over Selskabets Virksomhed (8°) (<i>Annual in Danish</i>)	Overs. Dan. Vid. Selsk.
Historisk-filosofiske Meddelelser (8°)	Hist. Filos. Medd. Dan. Vid. Selsk.
Historisk-filosofiske Skrifter (4°) (<i>History, Philology, Philosophy, Archeology, Art History</i>)	Hist. Filos. Skr. Dan. Vid. Selsk.
Matematisk-fysiske Meddelelser (8°)	Mat. Fys. Medd. Dan. Vid. Selsk.
Matematisk-fysiske Skrifter (4°) (<i>Mathematics, Physics, Chemistry, Astronomy, Geology</i>)	Mat. Fys. Skr. Dan. Vid. Selsk.
Biologiske Meddelelser (8°)	Biol. Medd. Dan. Vid. Selsk.
Biologiske Skrifter (4°) (<i>Botany, Zoology, General Biology</i>)	Biol. Skr. Dan. Vid. Selsk.

Selskabets sekretariat og postadresse: Dantes Plads 5, København V.

The address of the secretariate of the Academy is:

*Det Kongelige Danske Videnskabernes Selskab,
Dantes Plads 5, København V, Denmark.*

Selskabets kommissionær: EJNAR MUNKSGAARD's Forlag, Nørregade 6, København K.

The publications are sold by the agent of the Academy:

*EJNAR MUNKSGAARD, Publishers,
6 Nørregade, København K, Denmark.*

Biologiske Meddelelser
udgivet af
Det Kongelige Danske Videnskabernes Selskab

SOME MARINE ALGAE FROM MAURITIUS

BY

F. BØRGESEN



København 1940-57
i kommission hos Ejnar Munksgaard

Biologiske Meddelelser
udgivet af
Det Kongelige Danske Videnskabernes Selskab
Bind **23**, no. 4

Biol. Medd. Dan. Vid. Selsk. **23**, no. 4 (1957)

SOME MARINE ALGAE FROM MAURITIUS

FINAL PART

BY

F. BØRGESEN †

EDITED BY

TYGE CHRISTENSEN



København 1957
i kommission hos Ejnar Munksgaard

Synopsis.

Supplementary information is given on various algae discussed in the parts previously published. The whole series of papers, comprising 15 parts, is indexed.

Editor's Preface.

At the beginning of this year I undertook to assist the late Dr. BØRGESEN in his work on the final part of the series of papers dealing with marine algae from Mauritius. BØRGESEN's eyesight had become very bad at that time, and he found himself unable to do alone what was left to be done. On two short visits at his home I was told about his plans and received parts of his manuscripts for a closer study. At the time appointed for a third meeting he felt too weak to proceed, and shortly afterwards went to hospital, where he died on March 22nd, aged 90. Before then I had promised him to take care of the publishing alone, if necessary, by issuing the last articles together with an index to the complete series.

The whole text was available in the form of manuscripts and notes, mostly dating, it seems, from the end of 1954. My task has therefore been confined to that of fitting parts together and giving a slight finish to them, which has been done, of course, without interfering with the author's personal mode of writing.

BØRGESEN had begun an extension of the index accumulated from the various parts, to make it include a greater number of names and synonyms. This extension I have carried through, omitting only some very obsolete synonyms and such references where the algae in question are mentioned in the text without being either discussed or compared with species discussed, for instance when figuring as hosts of epiphytes.

The photographs are due to myself. In addition to those showing herbarium specimens I have taken leave to give two more, one to replace an unfinished verbal description of a cross section of *Spathoglossum asperum*, the other instead of a drawing referred to in BØRGESEN's text on *Vidalia fimbriata*, but apparently never made.

I hope I have done acceptably to this last product of a great authorship, which started nearly 67 years ago.

Copenhagen
Botanical Laboratory of the University

October 11th, 1956
TYGE CHRISTENSEN

PHAEOPHYCEAE

ISOGENERATAE

I. Dictyotales.

Fam. 1. Dictyotaceae.

Spathoglossum (Kütz.) J. Ag.

1. *Spathoglossum asperum* J. Ag.

Alg. Mauritius, II, 1941, p. 48.

In 1954 I received some fine specimens of this species from Dr. VAUGHAN, having formerly seen only two small specimens which the late much regretted Dr. TH. MORTENSEN had dredged at the shore off the island.

The specimens, the bases of which are wanting, are bushy, up to about 20 cm high or more. They are divided in a very irregular manner into a great number of larger and smaller lobes; some of these are undivided, elongate-lanceolate, tapering downwards into a more or less acute base, often with a short stipe, and upwards with a more or less acute, sometimes also rounded apex; other lobes become broadened out and irregularly, more or less deeply, bi-tri-multi-furcate (Fig. 1).

Along the margins many of the lobes are provided with short, more or less densely placed spines; this is especially the case in two smallish specimens.

The surface of the thallus is smooth in the specimens I have examined. The surface cells, when seen from above, are found to be arranged in more or less distinct rows; they are approximately quadratic, about 30—40 μ broad, being rather like those found in a specimen gathered in Ceylon by FERGUSON.



Fig. 1. *Spathoglossum asperum* J. Ag. ($\times 1/4$).

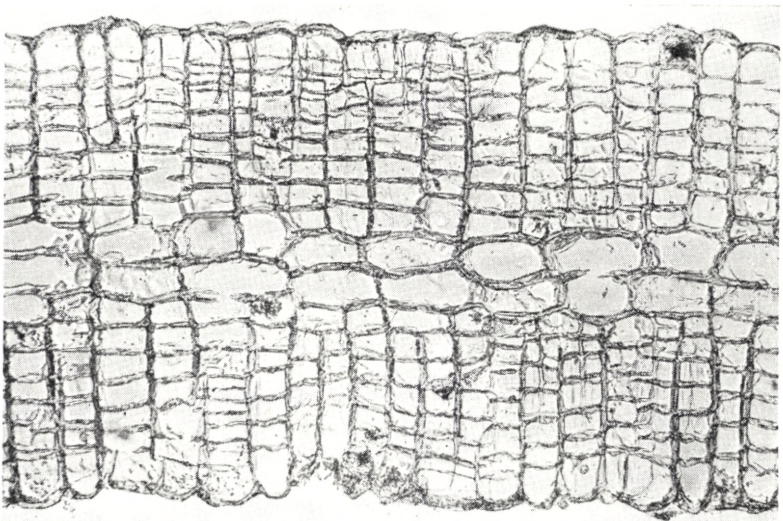


Fig. 2. *Spathoglossum asperum* J. Ag. Section through the lower part of the thallus ($\times 1000$).

A transverse section of the lower part of the thallus is seen in fig. 2.

The specimens were found washed up by waves after storm.
Mauritius: La Cambuse, 3-1-54, G. MORIN no. 1305 A.

Dictyopteris Lamouroux.

1. Dictyopteris serrata (Aresch.) Børgs.

Alg. Mauritius, Additional Lists, 1948, p. 47; Additions I, 1949, p. 25.

In the collection of algae received in the summer of 1954 two fine specimens of this species are found. One has a thallus about 2 cm broad. Its colour is yellowish brown. The other specimen has a thallus about 1—1 $\frac{1}{2}$ cm broad, the colour of which is dark brown. Both plants are about 30 cm high.

As has been said earlier, *Dictyopteris serrata* is surely a sublittoral species growing in the rather deep sea; both specimens were found "washed into lagoon after storm."

Mauritius: La Cambuse, 3-1-54 and 20-1-54, G. MORIN nos. 1306 and 1308.

RHODOPHYCEAE

FLORIDEAE

I. Nemalionales.

Fam. 1. Chaetangiaceae.

Galaxaura Lamouroux.

1. *Galaxaura breviarticulata* Kjellm.

Alg. Mauritius, III, 1, 1942, p. 54, figs. 26-27.

In 1954 I received some beautiful specimens of this species from Mauritius, having formerly seen only a single sterile specimen collected by JADIN.

KJELLMAN placed *Galaxaura breviarticulata* in his sectio *Dichotomaria*, subsectio *Cameratae*. The species belonging to this group are always tetrasporic; the tetrasporangia are terminally placed upon a short stalk. SVEDELIUS in his very valuable and detailed work: *Zytologisch-entwicklungsgeschichtliche Studien über Galaxaura*, Nov. Act. Reg. Soc. Sc. Ups. ser. IV vol. 13 no. 4, 1942, p. 139, places the species with this type of sporangia together in his sectio II: *Acrosporangiatæ*.

The specimens form dense tufts up to about 10 cm high. The thallus has in a dried condition a greyish colour and a somewhat mealy surface. The joints are of a somewhat variable size, about 5 mm long and 2 mm broad.

As is said in the above-cited Part III, 1, 1942, p. 58, this plant is surely the asexual form of the species which, in its sexual form, was named *Galaxaura corymbifera* by KJELLMAN.

The specimens were found washed up by waves after storm.
Mauritius: La Cambuse, 20-1-54. G. MORIN no. 1312.

II. Gigartinales.

Fam. 1. Nemastomaceae.

Titanophora (J. Ag.) Feldm.

1. *Titanophora mauritiana* Børgs.

BØRGESEN, F., On the Genus *Titanophora* (J. Ag.) Feldm. and Description of a new Species. Dansk Bot. Arkiv vol. 13, no. 4, 1949, p. 5, figs. 2—3 and pl. II.

In 1954 I received, besides a small specimen preserved in formalin and seawater, some very fine dried material of this species (Fig. 3) showing that it is a large stately plant.

The base, which was missing in the material formerly examined, is partly present in the large dried specimen, and in the small specimen preserved in formalin it is entire. It consists of a cartilaginous and very tough disc, from which several erect fronds of various sizes are given off. In the dried specimen, besides the large frond only one smaller frond issues from what is left of the disc.

The large frond has a thick flattened cuneate base, from both edges of which a number of erect, very polymorphic lobes are given off, the largest one reaching a length of about 40 cm. The large lobes are deeply subdivided into smaller very irregular ones, more or less narrowed at their base. Along the margins of these lobes proliferations issue, near the base simple and small, but upwards gradually larger and lobed themselves, each being a replica of the mother lobe. The proliferations are in most cases densely placed, separated by incisions which are rounded at the bottom; they are more or less curved and tapering towards their acute apex.

The colour of the specimens is a greyish rosy-red, and the surface is dull and mealy.

The specimens were found washed up by waves after storm.

Mauritius: La Cambuse, 3-1-54, G. MORIN no. 1304 A.



Fig. 3. *Titanophora mauritiana* Borgs. ($\times 1/3$).

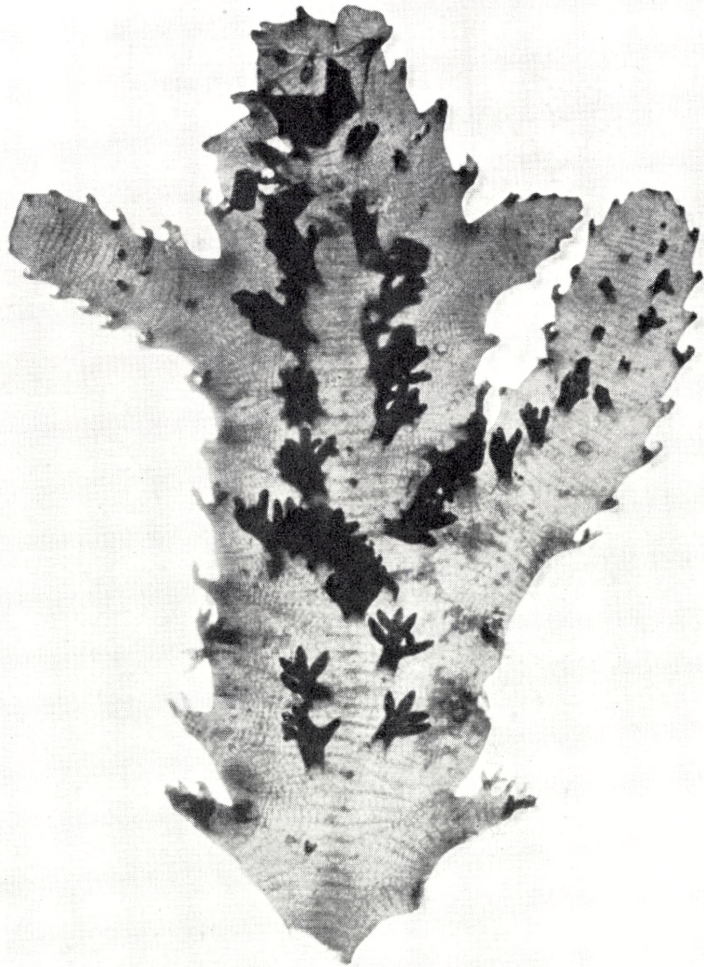


Fig. 4. *Vidalia fimbriata* (R.Br.) J.Ag. Part of the thallus ($\times 8$).

III. Ceramiales.

Fam. 1. *Rhodomelaceae*.

Subfam 1. *Amansieae*.

Vidalia Lamouroux.

1. *Vidalia fimbriata* (R. Br.) J. Ag.

FALKENBERG, P., Die Rhodomelaceen, Fauna u. Flora d. Golfes v. Neapel, 26. ("25.") Monographie, 1901, p. 430, pl. 7, fig. 19; Alg. Mauritius, III, 4, 1945, p. 44; Additions, VI, 1954, p. 47.

In the collection received in 1954 from Dr. VAUGHAN there are some fine specimens of this species. As appears from fig. 4, the plants are in good agreement with the description and figure given by FALKENBERG *l. c.*

The specimens are tetrasporic. The stichidia are developed on the branchlets, on the lateral ones as well as on those given off from the flat side of the thallus; they are rather short, about twice as long as broad, and a single or up to 3—4 stichidia are found on each branchlet.

As to the locality it is said: "growing on reef exposed to strong surf".

Mauritius: La Cambuse, 20-1-54, G. MORIN no. 1313.

Subfam. 2. *Laurencieae*.

Laurencia Lamouroux.

1. *Laurencia subcolumnaris* Børgs.

BØRGESEN, F., Two New Species of *Laurencia* from Mauritius. Bot. Tidsskr., vol. 51 (Professor Knud Jessen Festschrift), 1954, p. 48, figs. 1—3.

Mauritius: On rocks exposed to strong surf, Pointe aux Roches, 22-9-52, G. MORIN no. 1286 p. p.

2. *Laurencia verruculosa* Børgs.

BØRGESEN *l. c.* p. 50, figs. 4—5.

Mauritius: On rocks exposed to strong surf, Pointe aux Roches, 22-9-52, G. MORIN no. 1286 p. p.

Index of Species.

Synonyms printed in italics.

The present series of papers, with the common title Some Marine Algae from Mauritius, includes 15 parts, which are referred to in the index by their respective years of publication:

1940. I Chlorophyceae	Biol. Medd. Dan. Vid. Selsk.	15, no. 4
1941. II Phaeophyceae	—	16, no. 3
1942. III Rhodophyceae, Part 1: Porphyridiales, Bangiales, Nematoliales	—	17, no. 5
1943. III Rhodophyceae, Part 2: Gelidiales, Cryptonemiales, Gigartinales	—	19, no. 1
1944. III Rhodophyceae, Part 3: Rhodymeniales	—	19, no. 6
1945. III Rhodophyceae, Part 4: Ceramiales	—	19, no. 10
1946. An additional list of species to Part I Chlorophyceae	—	20, no. 6
1948. Additional lists to the Chlorophyceae and Phaeophyceae	—	20, no. 12
1949. Additions to the parts previously published	—	21, no. 5
1950. Additions to the parts previously published. II	—	18, no. 11
1951. Additions to the parts previously published, III	—	18, no. 16
1952. Additions to the parts previously published, IV	—	18, no. 19
1953. Additions to the parts previously published, V	—	21, no. 9
1954. Additions to the parts previously published, VI	—	22, no. 4
1957. Final part	—	23, no. 4

Four smaller papers are connected with this series, but have been published outside it, and therefore are not included in the index:

1942. *Griffithsia Weber-van-Bossee*, nov. spec. *Blumea*, Suppl. II (Dr. A. A. Weber-van Bosse Jubilee Vol.): 15—20.
1949. On the genus *Titanophora* (J. Ag.) Feldm. and Description of a New Species. Dansk Bot. Arkiv 13, no. 4. (*Titanophora Pikeana* (J. Ag.) Feldm., *T. intricustans* (J. Ag.) Borgs., *T. Weberae* Borgs., *T. mauritiana* Borgs., *T. calcarea* (Okamura) Borgs.).
1950. *Vaughaniella*, A New Genus of the Dictyotaceae. Biol. Medd. Dan. Vid. Selsk. 18, no. 8.
1954. Two New Species of *Laurencia* from Mauritius. Bot. Tidsskr. 51 (Professor Knud Jessen Festschrift): 48—52. (*Laurencia subcolumnaris* Borgs., *L. verruculosa* Borgs.).

Chlorophyceae.

Acetabularia Caliculus Quoi & Gaimard	1946 p.33
— <i>Caliculus</i> Dickie	1940 p.44
— <i>Farlowii</i> Solms	1946 p.33
— <i>minutissima</i> Okamura	1951 p. 7
— <i>Moebii</i> Solms	1940 p.44, 1951 p. 6
— <i>Suhrii</i> Solms	1946 p.33
Aegagropila — see Cladophora	
<i>Agardhia areolata</i> Cabrera	1946 p.56
Anadyomene <i>Wrightii</i> Gray	1940 p.32
Avrainvillea <i>amadelpa</i> (Mont.) A. & E. S. Gepp	1940 p.54, 1953 p.10
— — <i>forma Montagneana</i> A. & E. S. Gepp...	1940 p.54, 1948 p.33
— <i>erecta</i> (Berkeley) A. & E. S. Gepp	1940 p.53
— <i>gracillima</i> Børgs.	1940 p.52, 1946 p.42
— <i>papuana</i> Murray & Boodle	1940 p.53
— <i>Ridleyi</i> A. & E. S. Gepp	1948 p.34
— <i>spec.</i>	1946 p.40
Boergesenia <i>Forbesii</i> (Harv.) Feldm.	1948 p.21
Bolbocoleon <i>piliferum</i> Pringsheim	1952 p. 5
Boodlea <i>composita</i> (Harv.) Brand	1940 p.21, 1946 p.15
— — <i>f. elongata</i> Brand	1940 p.22
— — <i>f. contracta</i> Brand	1946 p.16
— <i>siamensis</i> Reinb.	1946 p.16
Bornetella <i>nitida</i> (Harv.) Munier-Chalmas	1946 p.32
— — <i>var. minor</i> Børgs.	1948 p.24
— <i>sphaerica</i> (Zan.) Solms	1948 p.26, p.52
Bryopsis <i>caespitosa</i> Dickie	1940 p.45
— <i>caespitosa</i> Jadin	1946 p.35
— <i>Harveyana</i> J. Ag.	1946 p.34
— <i>hypnoides</i> Lamouroux	1946 p.34
— <i>indica</i> A. & E. S. Gepp	1940 p.44, 1953 p.6, 1954 p. 5
— <i>pachynema</i> Martens	1949 p.5, 1951 p. 5
— <i>plumosa</i> Ag. <i>γ secunda</i> Harv.	1946 p.34
— <i>spec.</i>	1946 p.35
<i>Caulerpa ambigua</i> Okamura	1949 p.6, 1953 p. 7
— — <i>var. Vickersiae</i> Eubank	1949 p.10
— — <i>var. simplex</i> Eubank	1949 p.10
— — <i>var. dichotoma</i> Eubank	1949 p.12
— <i>anceps</i> Harv.	1940 p.47
— <i>brachypus</i> Harv.	1940 p.47, 1946 p.36, 1948 p.31
— — <i>var. mauritiana</i> Børgs.	1948 p.32
— — — <i>forma exposita</i> Børgs.	1951 p. 8
— <i>clavifera</i> Jadin p. p.	1946 p.39
— <i>crassifolia</i> (Ag.) J. Ag.	1952 p. 9

Caulerpa crassifolia (Ag.) J. Ag. var. *mexicana* (Sond.)

	Web. v. Bosse	1952	p.10	
— — forma <i>exposita</i> Børgs.....		1954	p. 8	
— — forma <i>minima</i> Børgs.		1952	p.10	
— <i>cupressoides</i> (Vahl) Ag. 1940 p.50, 1946 p.38, 1951 p.9,		1953	p. 8	
— — var. <i>ericifolia</i> Web. v. Bosse		1953	p. 8	
— — var. <i>mamillosa</i> (Mont.) Web. v. Bosse... 1940 p.51,		1948	p.32	
— — var. <i>plumarioides</i> Børgs.		1946	p.39	
— <i>denticulata</i> Decsne.....		1946	p.38	
— <i>fastigiata</i> Mont.....		1946	p.36	
— — forma <i>minor</i> Web. v. Bosse.....		1946	p.36	
— <i>flagelliformis</i> Ag. forma <i>ligulata</i> (J. Ag.) Web. v. Bosse		1940	p.47	
— <i>Freycinetii</i> Ag.....	1940	p.50,	1946	p.38
— — var. <i>integerrima</i> Zan.		1949	p.15	
— <i>Herveyana</i> Kütz.....		1952	p.10	
— <i>lentillifera</i> J. Ag.....		1953	p. 9	
— — forma <i>parvula</i> Børgs.	1949	p.15,	1952	p.11
— <i>ligulata</i> Harv. ex J. Ag.....		1940	p.47	
— <i>longistipitata</i> (Web. v. Bosse) Svedelius		1949	p.17	
— <i>mauritiana</i> Børgs.....	1940	p.45,	1948	p.31
— <i>mexicana</i> Kütz.		1952	p. 9	
— <i>najadiiformis</i> Dickie		1940	p.50	
— <i>peltata</i> Lamouroux.. 1940 p.51, 1946 p.39, 1952 p.11,		1953	p. 9	
— — var. <i>nummularia</i> (Harv.) Web. v. Bosse		1946	p.40	
— — var. <i>stellata</i> (Harv. ex J. Ag.) Web. v. Bosse		1951	p.10	
— <i>peltata</i> Jadin p. p.....		1946	p.39	
— <i>pinnata</i> Web. v. Bosse		1952	p. 9	
— <i>prolifera</i> (Forssk.) Lamouroux.....		1940	p.48	
— <i>racemosa</i> (Forssk.) Web. v. Bosse				
var. <i>clavifera</i> (Turn.) Web. v. Bosse				
1946 p.39, 1948 p.32, 1949 p.14. 1952 p.11, 1953 p. 8				
— — — forma <i>microphysa</i> Web. v. Bosse 1949 p.15,		1952	p.11	
— — — forma <i>reducta</i> Børgs. ... 1946 p.39, 1949 p.14,		1954	p. 9	
— — — forma <i>simplicissima</i> Børgs..... 1949 p.14,		1953	p. 8	
— — — var. <i>laetevirens</i> (Mont.) Web. v. Bosse .. 1946 p.39,		1952	p.11	
— — — var. <i>Lamourouxii</i> (Turn.) Web. v. Bosse forma				
<i>Requienii</i> (Mont.) Web. v. Bosse		1949	p.15	
— — — var. <i>microphysa</i> (Web. v. Bosse) Taylor 1952 p.11,		1954	p. 8	
— — — var. <i>occidentalis</i> (J. Ag.) Børgs.....		1946	p.39	
— — — var. <i>uvifera</i> (Turn.) Ag. 1940 p. 51,		1951	p.10	
— <i>scalpelliformis</i> (R. Br.) Web. v. Bosse forma <i>denticulata</i>				
(Decsne) Web. v. Bosse	1940	p.49,	1946	p.38
— — forma <i>dworkensis</i> Børgs.....		1940	p.49	
— <i>serrulata</i> (Forssk.) J. Ag. emend. Børgs.				
1940 p.50, 1946 p.38, 1953 p. 8				
— — forma <i>lata</i> Web. v. Bosse		1949	p.13	
— <i>sertularioides</i> (Gmel.) Howe		1940	p.49	

Caulerpa sertularioides (Gmel.) Howe forma brevipes J. Ag.	1946 p. 38
— — forma Farlowii Web. v. Bosse	1940 p. 50
— — forma longisetata J. Ag.	1946 p. 38
— — var. <i>elegans</i> Jadin	1946 p. 38
— <i>Stahlia</i> Web. v. Bosse	1940 p. 47, 1946 p. 37
— <i>stellata</i> Harv. ex J. Ag.	1951 p. 10
— <i>tomentella</i> Harv.	1946 p. 36
— <i>Urvilliana</i> Mont.	1949 p. 12
— <i>Vickersiae</i> Børgs.	1949 p. 6, 1953 p. 6, 1954 p. 6
— — var. <i>luxurians</i> Taylor	1949 p. 8
— — var. <i>furcifolia</i> Taylor	1949 p. 8
— <i>Webbiana</i> Mont.	1940 p. 45
— — forma <i>tomentella</i> (Harv.) Web. v. Bosse	1946 p. 36, 1951 p. 8
Chaetomorpha aerea (Dillw.) Kütz.	1940 p. 40
— <i>aerea</i> Jadin	1946 p. 29
— <i>antennina</i> (Bory) Kütz.	1940 p. 37, 1946 p. 29
— <i>gracilis</i> Kütz.	1946 p. 29
— <i>indica</i> Kütz.	1940 p. 41
— <i>intestinalis</i> Jadin	1946 p. 30
— <i>javanica</i> Dickie	1940 p. 40
— <i>linoides</i> (Ag.) Kütz.	1940 p. 40
— <i>Linum</i> (Müller) Kütz.	1946 p. 30
— <i>media</i> (Ag.) Kütz.	1940 p. 37
— <i>natalensis</i> (Her.) De Toni	1940 p. 42, 1946 p. 30, 1948 p. 6
— — forma <i>exposita</i> Børgs.	1948 p. 6
<i>Chamaedoris annulata</i> auct.	1940 p. 16
— <i>auriculata</i> Børgs.	1940 p. 20
— <i>Delphinii</i> (Harriot) Feldm. & Børgs.	1940 p. 16
— <i>orientalis</i> Okamura & Higashi	1940 p. 20
— <i>Peniculum</i> (Sol.) O. Kuntze	1940 p. 17
<i>Chloroplegma sordidum</i> Zan.	1940 p. 54
<i>Cladophora</i> (?) <i>anastomosans</i> Harv.	1952 p. 7
— <i>boodleoides</i> Børgs.	1940 p. 31
— <i>composita</i> Harv.	1940 p. 21, 1946 p. 17
— <i>cristata</i> Kütz.	1946 p. 27
— <i>Echinus</i> (Bias.) Kütz.	1948 p. 17
— <i>Ecklonii</i> Dickie	1940 p. 35, 1946 p. 21
— <i>fascicularis</i> (Mert.) Kütz.	1940 p. 34, 1946 p. 21, p. 25, 1948 p. 8
— <i>fracta</i> Kütz. forma <i>marina</i> Hauck	1946 p. 18
— <i>fuscescens</i> Kütz.	1948 p. 19
— <i>Hauckii</i> Børgs.	1946 p. 18, 1948 p. 18
— <i>heteronema</i> Brand	1946 p. 18
— <i>inserta</i> Dickie	1946 p. 23, p. 25, 1948 p. 8
— — forma <i>ungulata</i> (Brand) Setch.	1948 p. 9
— <i>intertexta</i> Levring	1948 p. 18
— <i>kamerunica</i> Brand	1946 p. 28
— <i>luteola</i> Jadin	1946 p. 21

- Cladophora mauritiana* Kütz. 1940 p. 35, 1946 p. 21
 — — var. *unqulata* Brand 1946 p. 22, 1948 p. 9
 — *patentiramea* (Mont.) Kütz. forma *longiarticulata* Reinb. 1946 p. 28
 — *patentiramea* f. *longiarticulata* Børgs. 1940 p. 36, 1946 p. 28
 — *prolifera* (Roth) Kütz. 1948 p. 11
 — *repens* var. *columbensis* Jadin 1946 p. 15, p. 29
 — *rupestris* (L.) Kütz. 1948 p. 11
 — *saviniana* Børgs. 1948 p. 10
 — *Savoena* Reinb. 1946 p. 27
 — *socialis* Kütz. 1946 p. 28, 1948 p. 19
 — — var. *hawaiiiana* Brand 1946 p. 28
 — *Tildenii* Brand 1948 p. 18
 — *timorensis* Martens 1940 p. 35
 — *Vaughanii* Børgs. 1948 p. 13, 1952 p. 12
 — *Zollingeri* Kütz. 1946 p. 15
Cladophoropsis limicola Setch. 1940 p. 21
 — *sundanensis* Reinb. 1940 p. 21, 1946 p. 15
 — *Zollingeri* (Kütz.) Børgs. 1946 p. 15, p. 17, 1948 p. 23
 — spec. — see *Spongocladia vaucheriaeformis* Aresch., at
 the end of the Chlorophyceean index
Codium adhaerens Jadin 1946 p. 46
 — *arabicum* Kütz. 1940 p. 61, 1946 p. 45, 1948 p. 35
 — *Barlettii* Tseng & Gilbert 1949 p. 23, 1953 p. 11, 1954 p. 10
 — *bulbopilum* Setch. 1940 p. 72, 1946 p. 51
 — *coronatum* Setch. 1940 p. 63, 1946 p. 45
 — — var. *aggregatum* Børgs. 1940 p. 63
 — — var. *inseulptum* Setch. 1940 p. 67
 — *decorticatedum* (Woodw.) Howe 1940 p. 72
 — *dichotomum* (Huds.) S. F. Gray 1949 p. 22
 — *difforme* Kütz. 1946 p. 48, 1948 p. 37
 — *difforme* Jadin 1946 p. 49
 — *divaricatum* A. & E. S. Gepp 1946 p. 49
 — *elongatum* Ag. 1946 p. 56
 — *elongatum* Børgs. 1940 p. 72, 1946 p. 56, 1949 p. 23
 — *intertextum* Collins & Hervey 1940 p. 63
 — *Geppei* O. Chr. Schmidt 1940 p. 72, 1946 p. 49, 1948 p. 38, 1953 p. 10
 — *Geppei* Børgs. 1946 p. 49, 1949 p. 19
 — *mauritanum* (Børgs.) Børgs. 1946 p. 46, 1948 p. 36
 — *prostratum* Levring 1946 p. 53
 — *repens* (Crouan) Vickers 1940 p. 70
 — *spongiosum* Harv. 1946 p. 46, 1948 p. 37
 — — var. *mauritanum* Børgs. 1940 p. 68, 1946 p. 46
 — *taitense* Setch. 1946 p. 49, 1949 p. 19
 — *tenue* Kütz. 1940 p. 72, 1946 p. 52, 1948 p. 39
 — *tomentosum* (Huds.) Stackh. 1949 p. 22
 — *tomentosum* Jadin p. p. 1946 p. 52, p. 55
 — *Vaughanii* Børgs. 1940 p. 70, 1946 p. 53

<i>Codium spec.</i>	1946 p.56,	1949 p.23
<i>Dichonema erectum</i> Berkeley		1940 p.53
<i>Dictyosphaeria australis</i> Setch.		1940 p.13
— <i>cavernosa</i> (Forssk.) Børgs.	1940 p.12,	1946 p.13
— var. <i>bullata</i> Børgs.		1952 p. 5
— <i>favulosa</i> (Ag.) Decsne		1940 p.12
— <i>intermedia</i> Web. v. Bosse		1946 p.14
— <i>sericea</i> Dickie		1940 p.15
— <i>Setchellii</i> Børgs.	1940 p.12,	1948 p.21
— <i>van-Bosseae</i> Børgs.		1940 p.13
— <i>Versluysii</i> Web. v. Bosse		1940 p.13
<i>Endoderma vagans</i> Børgs.		1940 p. 7
— <i>viride</i> (Reinke) Lagerh.		1946 p. 5
<i>Enteromorpha clathrata</i> (Roth) J. Ag.		1946 p. 8
— — var. <i>crinita</i> Hauck		1940 p. 9
— — var. <i>Hopkirkii</i> (M. Calla) Hamel		1940 p. 9
— <i>compressa</i> (L.) Grev.		1946 p. 8
— — var. <i>prolifera</i> (Müller) Hamel		1940 p. 8
— <i>flexuosa</i> (Wulfen) J. Ag.	1940 p.9,	1946 p. 8
— <i>ramulosa</i> (Smith) Hooker		1946 p. 8
<i>Entocladia viridis</i> Reinke		1946 p. 5
<i>Ernodesmis verticillata</i> (Kütz.) Børgs.	1940 p.15,	1946 p.14
<i>Geppella Mortensenii</i> Børgs.		1940 p.55
<i>Halimeda incrassata</i> (Ellis & Solander) Lamouroux		1940 p.61
— — forma <i>robusta</i> Børgs.		1940 p.61
— <i>Opuntia</i> Lamouroux.	1940 p.61,	1946 p.43
— <i>Tuna</i> (Ellis & Solander) Lamouroux	1940 p.60,	1946 p.43
— — var. <i>Albertisii</i> Piccone	1940 p.60,	1946 p.43
— — forma <i>platydisca</i> (Decsne) Barton		1940 p.60
<i>Microdictyon Agardhianum</i> Decsne.	1940 p.25, 1946 p.18,	1954 p. 5
— <i>Agardhianum</i> Dickie.		1940 p.28
— <i>Kraussii</i> Gray		1940 p.28
— <i>Montagnei</i> Harv.		1940 p.32
— <i>pseudohapteron</i> A. & E. S. Gepp		1940 p.27
— <i>Spongiola</i> Berthold		1940 p.31
— <i>tenue</i> Gray		1940 p.25
— <i>spec.?</i>		1940 p.29
<i>Monostroma latissimum</i> (Kütz.) Wittr.		1940 p. 8
— <i>mauritianum</i> Jadin		1946 p.10
— <i>oxycoccum</i> (Kütz.) Thur.		1940 p. 8
<i>Neomeris annulata</i> Dickie	1940 p.43,	1949 p. 5
— <i>dumetosa</i> Lamouroux		1946 p.31
— (?) <i>sphaerica</i> Zan.		1948 p.26
— <i>van-Bosseae</i> Howe		1946 p.31
<i>Ochlochaete dendroides</i> Crouan		1940 p. 7
<i>Phaeophila dendroides</i> (Crouan) Batters		1940 p. 7
— <i>Floridearum</i> Hauck		1940 p. 7

<i>Prasiola calophylla</i> Menegh.	1946 p.12
— <i>mauritiana</i> (Jadin) Børgs.	1946 p.10
— <i>mexicana</i> J. Ag.	1946 p.10
<i>Pringsheimiella mauritiana</i> Børgs.	1946 p. 6
— <i>scutata</i> (Reinke) Schmidt & Petrack	1946 p. 7
<i>Pseudobryopsis hainanensis</i> Tseng	1948 p.30
— <i>mauritiana</i> Børgs.	1948 p.27
— <i>mucronata</i> Børgs.	1948 p.30
— <i>Myura</i> (J. Ag.) Berthold	1948 p.30
— <i>pambanensis</i> Iyengar	1948 p.31
<i>Pseudovalonia Forbesii</i> (Harv.) Iyengar	1948 p.21
<i>Rhipidosiphon javensis</i> Mont.	1954 p. 9
<i>Rhizoclonium grande</i> Børgs.	1946 p.31, 1948 p.6, 1952 p. 8
— <i>Kernerii</i> Stockm.	1940 p.43
— <i>Kockianum</i> Kütz.	1946 p.30, 1948 p. 5
— <i>tortuosum</i> Jadin	1946 p.29
<i>Siphonocladus Delphinii</i> Hariot	1940 p.16
— <i>Feldmannii</i> Børgs.	1948 p.22
— <i>perpusillus</i> Setch. & Gardn.	1948 p.22
— <i>pusillus</i> (Kütz.) Hauck	1948 p.22
— <i>tropicus</i> (Crouan) J. Ag.	1946 p.14, 1951 p. 5
<i>Spongia dichotoma</i> Huds.	1949 p.22
<i>Struvea anastomosans</i> (Harv.) Piccone	1952 p.7, 1953 p. 5
— <i>delicatula</i> Kütz.	1952 p. 7
— <i>elegans</i> Børgs.	1940 p.24
<i>Teresias natalensis</i> (Her.) Aresch.	1940 p.42
<i>Udotea amadelpa</i> Mont.	1940 p.54
— <i>argentea</i> Zan.	1940 p.60, 1946 p.42, 1949 p.18
— — var. <i>spumosa</i> A. & E. S. Gepp	1940 p.60, 1949 p.19
— <i>flabellata</i> Jadin p. p.	1946 p.40, p.42
— <i>flabellum</i> (Ellis & Solander) Howe.	1946 p.42
— <i>javensis</i> (Mont.) A. & E. S. Gepp.	1940 p.44, 1954 p. 9
— <i>Palmetta</i> Decsne.	1940 p.59, 1948 p.34
— <i>sordida</i> Dickie	1940 p.54
<i>Ulva fasciata</i> Delile	1940 p.10, 1946 p. 9
— <i>Lactuca</i> L.	1940 p.10, 1946 p. 9
— — forma <i>myriotrema</i> (Desm.) Le Jolis	1946 p. 9
— <i>latissima</i> L.	1946 p. 9
— <i>oxycocca</i> Kütz.	1940 p. 8
<i>Valonia Aegagropila</i> Ag. 1940 p.11, 1946 p.13, 1948 p.21, 1953 p. 5	
— <i>Cladophora</i> Kütz.	1948 p.21
— <i>Cladophora</i> Dickie.	1940 p.21
— <i>confervoides</i> Harv.	1949 p. 5
— <i>confervoides</i> Jadin	1940 p.16, 1946 p.13, p.14
— <i>fastigiata</i> Harv.	1940 p.12, 1946 p.13
— <i>Forbesii</i> Harv.	1948 p.21
— <i>utricularis</i> (Roth) Ag.	1940 p.11

<i>Valonia utricularis</i> (Roth) Ag. forma crustacea Kuck.	1948 p.20
— <i>ventricosa</i> J.Ag.	1940 p.11, 1948 p.20
— <i>verticillata</i> Kütz.	1940 p.15
<i>Valoniopsis pachynema</i> (Martens) Børgs.	1949 p.5, 1951 p. 5

Spongocladia vaucheriaeformis Aresch.

1940 p.25, 1946 p.17, 1948 p.23, 1952 p.12

Phaeophyceae.

<i>Asperococcus intricatus</i> J.Ag.	1941 p.65, 1948 p.50
<i>Aegira</i> Fries	1941 p.53
<i>Bactrophora nigrescens</i> Web. v. Bosse	1941 p.55
<i>Blossevillea heterophylla</i> Kütz.	1941 p.66
<i>Castagnea</i> Derb. & Sol.	1941 p.53
<i>Castagnea Zosteræ</i> Børgs.	1941 p.55
<i>Chnoospora fastigiata</i> J. Ag.	1954 p.11
— — var. <i>pacifica</i> J.Ag.	1941 p.63, 1948 p.50
— <i>implexa</i> (Her.) J. Ag.	1941 p.63, 1948 p.50, 1953 p.18
— <i>obtusangula</i> (Harv.) Sond.	1941 p.64
— <i>pannosa</i> J. Ag.	1941 p.63
<i>Cladophion decipiens</i> (Sur.) Okamura	1941 p.57
— <i>erythraeus</i> J. Ag.	1953 p.16
— <i>mauritanus</i> Børgs.	1941 p.54
— <i>occidentalis</i> Kylin	1941 p.55
— <i>Sibogae</i> Kylin	1941 p.55
<i>Colpomenia sinuosa</i> (Roth) Derb. & Sol.	1941 p.61, 1948 p.49
— — forma <i>expansa</i> Saunders	1941 p.62
— — forma <i>tuberculata</i> (Saunders) Setch. & Gardn.	1941 p.62
— <i>tuberculata</i> Saunders	1941 p.62
<i>Cystophyllum muricatum</i> (Turn.) J. Ag.	1948 p.51
<i>Cystoseira Myrica</i> (Gmel.) J. Ag.	1948 p.51
<i>Dictyopteris serrata</i> (Aresch.) Børgs. 1948 p.47, 1949 p.25, 1957 p. 7	
<i>Dictyota acutiloba</i> Kütz.	1941 p.50
— <i>Bartayresiana</i> Lamouroux	1941 p.51
— — var. <i>divaricata</i> J. Ag.	1941 p.50
— <i>Bartayresiana</i> Jadin	1948 p.46
— <i>dichotoma</i> (Huds.) Lamouroux	1953 p.15
— <i>divaricata</i> Lamouroux	1941 p.50, 1948 p.46, 1953 p.16
— <i>indica</i> Jadin	1948 p.46
— <i>obtusangula</i> Harv.	1941 p.63
— <i>variegata</i> Lamouroux	1941 p.47
<i>Ectocarpus amicornum</i> Harv.	1941 p.9, p.15, 1948 p.45
— <i>arabicus</i> Fig. & De Not.	1941 p.23
— <i>breviarticulatus</i> J. Ag.	1941 p.5, p.39, 1948 p.45
— <i>coniferus</i> Børgs.	1941 p.23
— <i>coniger</i> Børgs.	1941 p.23

<i>Ectocarpus cryptophilus</i> Børgs.	1941 p.30
— <i>Duchassaingianus</i> Grunow	1941 p.6, p.9, p.16, 1948 p.44
— <i>Enhali</i> Børgs.	1941 p. 6
— <i>filifer</i> Børgs.	1941 p.30
— <i>guadeloupensis</i> Crouan ex Vickers nom. nud.	1941 p. 9
— <i>hamatus</i> Crouan ex Vickers nom nud.	1941 p.5, p.39
— <i>indicus</i> Sonder.	1941 p.5, p.9, p.15, p.16 ¹ , 1948 p.42, p.44
— <i>indicus</i> Askenasy	1941 p.25
— <i>indicus</i> Jadin p. p.	1948 p.44, p.45
— <i>irregularis</i> Kütz.	1941 p.5, p.23, 1948 p.44
— — forma <i>brevicarpus</i> Børgs.	1941 p.30
— <i>Mitchellae</i> Harv.	1941 p.5, p.7, p.17, p.22, 1948 p.44
— — forma <i>brevicarpus</i> Børgs.	1941 p.15
— <i>Padinae</i> (Buffh.) Sauv.	1941 p.34
— <i>paradoxus</i> Mont.	1941 p.36
— <i>Rallsiae</i> Vickers.	1941 p.23
— <i>rhodochortonoides</i> Børgs.	1941 p.36
— <i>siliculosus</i> (Dillw.) Lyngb.	1948 p.42
— <i>simpliciusculus</i> Askenasy.	1941 p.25
— <i>spongiosus</i> Dickie	1941 p.5, p.39, 1948 p.45
— <i>Tamarinii</i> Børgs.	1941 p.36
— <i>terminalis</i> Kütz.	1941 p. 6
— <i>thyrsoideus</i> Børgs.	1941 p.30
— <i>van-Bosseae</i> Setch. & Gardn.	1941 p.30
— <i>Vaughanii</i> Børgs.	1941 p.31, 1953 p.13
— <i>virescens</i> Thur. ex. Sauv.	1941 p. 7
<i>Encoelium intricatum</i> (J. Ag.) Kütz.	1941 p.65
<i>Eudesme virescens</i> (Carm.) J. Ag.	1941 p.53
<i>Feldmannia</i> — see <i>Ectocarpus</i>	
<i>Fucus heterophyllus</i> Turn.	1941 p.66
— <i>muricatus</i> Turn.	1948 p.51
— <i>Myrica</i> Gmel.	1948 p.51
— <i>serratus</i> L.	1948 p.47
— <i>subrepandus</i> Forssk.	1941 p.72
— <i>turbinatus</i> L. var. <i>ornatus</i> Turn.	1941 p.65
<i>Giffordia</i> — see <i>Ectocarpus</i>	
<i>Gonodia arabica</i> (Kütz.) Børgs.	1941 p.52
<i>Gymnosorus variegatus</i> (Lamouroux) J. Ag.	1941 p.47
<i>Haliseris serrata</i> Aresch.	1948 p.47
<i>Hecatonema terminale</i> (Kütz.) Kylin.	1941 p. 6
<i>Hydroclathrus cancellatus</i> Bory	1948 p.49

¹ On reconsidering the figure given on p. 18 I have come to the conclusion that I have made a mistake by referring the fragments pictured to *Ectocarpus indicus*. Apart from the sporangia the appearance of the plant is that of *E. Mitchellae* and not that of *E. indicus* = *E. Duchassaingianus*, cp. my drawings in Mar. Alg. D. W. I. vol. I 1914, so now I think it is a form of *E. Mitchellae* with relatively long and somewhat irregular plurilocular sporangia.

Hydroclathrus clathratus (Bory) Howe	1941 p.62, 1948 p.49
— <i>sinuosus</i> Zan.	1948 p.49
<i>Linkia Zosteræ</i> Lyngb.	1941 p.53
<i>Mesogloia decipiens</i> Sur.	1941 p.57
— <i>gracilis</i> Her. & Martens.	1953 p.16
<i>Myriactula arabica</i> (Kütz.) Feldm.	1941 p.52
<i>Myriocladia capensis</i> Jadin	1948 p.49
<i>Nemacystus decipiens</i> (Sur.) Kuck. . 1941 p.57, 1948 p.48, 1953 p.17	
— <i>erythraeus</i> (J.Ag.) Sauv.	1941 p.59, 1953 p.16
— <i>flexuosus</i> (Ag.) Kylin	1941 p.59
— <i>subsimplex</i> Kylin	1941 p.61
<i>Padina australis</i> Hauck	1941 p.49
— <i>Commersonii</i> Bory 1941 p.49, 1948 p.48, 1951 p.12, p.14, 1953 p.13	
— <i>Durvillæi</i> Harv.	1941 p.50
— <i>gymnospora</i> (Kütz.) Vickers	1941 p.49, 1948 p.47
— <i>pavonia</i> Jadin	1941 p.50, 1948 p.48
— <i>Sanctæ-Crucis</i> Børgs.	1941 p.50
— <i>tetrahedrica</i> Hauck	1941 p.50
— <i>spec.</i>	1951 p.11, p.14
<i>Phycophila arabica</i> Kütz.	1941 p.52
<i>Phyllacantha Myrica</i> Kütz.	1948 p.51
<i>Pocockiella variegata</i> (Lamouroux) Papenf.	1948 p.46
<i>Rosenvingea intricata</i> (J.Ag.) Børgs.	1941 p.65, 1948 p.50
<i>Sargassum aquifolium</i> (Turn.) J.Ag.	1941 p.69
— <i>bacciferum</i> (Turn.) Ag. forma <i>capillifolium</i> Kütz.	1941 p.70
— <i>crassifolium</i> J.Ag.	1941 p.67
— <i>cristaefolium</i> Harv.	1951 p.68
— <i>densifolium</i> Zan.	1941 p.69
— <i>duplicatum</i> J.Ag.	1941 p.68
— <i>granuliferum</i> Ag.	1941 p.68
— <i>heterophyllum</i> (Turn.) Ag.	1941 p.66
— <i>ilicifolium</i> (Turn.) Ag. var. <i>duplicatum</i> J.Ag.	1941 p.68
— <i>latifolium</i> (Turn.) Ag.	1941 p.69
— <i>lendigerum</i> (L.) Ag.	1941 p.70
— <i>leptopodium</i> J.Ag.	1941 p.72
— <i>Merrifieldii</i> J.Ag.	1941 p.71
— <i>myriocystum</i> J.Ag.	1941 p.68
— <i>obovatum</i> Harv. var. <i>Robillardii</i> Grunow	1941 p.67
— <i>onustum</i> Harv.	1941 p.68
— <i>paniculatum</i> J.Ag.	1941 p.73
— <i>polycystum</i> Ag. var. <i>onustum</i> J.Ag.	1941 p.68
— <i>polyphyllum</i> J.Ag.	1941 p.72
— <i>polyporum</i> Mont.	1941 p.72
— <i>Porterianum</i> Zan.	1941 p.70
— — forma <i>lendigerioides</i> Setch.	1941 p.70
— <i>Scopula</i> Grunow	1941 p.71
— <i>spinifex</i> Ag.	1941 p.69

Sargassum subrepandum (Forssk.) Ag.	1941 p.72
— torvum J. Ag.	1941 p.72
Spathoglossum asperum J. Ag.	1941 p.48, 1957 p. 5
Sphacelaria cornuta Sauv.	1941 p.42
— furcigera Kütz.	1941 p.46
— Novae-Hollandiae Sond.	1941 p.45
— rigida Her.	1941 p.42
— taitensis Setch.	1941 p.44
— tribuloides Menegh.	1941 p.41, p.44
<i>Stylophora vesicata</i> Harv.	1941 p.62
Turbinaria ornata (Turn.) J. Ag.	1941 p.65
<i>Vaughaniella rupicola</i> Børgs.	1951 p.11, 1953 p.14
<i>Zonaria gymnospora</i> Kütz.	1941 p.49
— <i>variegata</i> (Lamouroux) Ag.	1941 p.47, 1948 p.46

Rhodophyceae.

Acanthophora orientalis J. Ag.	1945 p.61
— spicifera (Vahl) Børgs.	1945 p.61, 1953 p.56
— <i>Thierii</i> Lamouroux.	1945 p.61
<i>Acrocarpus intricatus</i> Kütz.	1943 p.53
— <i>pubvinatus</i> (Ag.) Kütz.	1943 p.6, 1954 p.21
— <i>setaceus</i> Kütz.	1954 p.21
<i>Acrochaetium caespitifforme</i> Børgs.	1942 p.13
— <i>candelabrum</i> Børgs.	1942 p. 8
— <i>Chnoosporae</i> Børgs.	1942 p.13
— <i>Collinsianum</i> Børgs.	1952 p.15
— <i>crassipes</i> (Børgs.) Børgs.	1942 p. 8
— — <i>var. longisetum</i> Børgs.	1942 p. 8
— <i>Krusadii</i> Børgs.	1942 p.12
— <i>Liagorae</i> Børgs.	1952 p.15
— <i>mauritanum</i> Børgs.	1942 p.11
— <i>robustum</i> Børgs.	1942 p.15
— <i>subseriatum</i> Børgs.	1942 p.15, 1952 p.13
— <i>Trichogloeae</i> Børgs.	1952 p.13
— <i>trifilum</i> (Buff.) Batters	1942 p.10
<i>Actinotrichia fragilis</i> (Forssk.) Børgs. 1942 p.44, 1950 p.5, 1951 p.35	
— <i>rigida</i> (Lamouroux) Decsne	1942 p.44
<i>Aglaothamnion cordatum</i> (Børgs.) Feldmann-Mazoyer	1952 p.62
— <i>monopodon</i> Børgs.	1945 p.19
— <i>Sarcodiae</i> Børgs.	1952 p.59
<i>Amansia Dietrichiana</i> Grunow	1945 p.44
— <i>fasciculata</i> Kütz.	1945 p.43
— <i>glomerata</i> Ag.	1945 p.43, 1952 p.68
— <i>jungermannioides</i> Martens & Her.	1945 p.42
— <i>Melbillii</i> J. Ag.	1945 p.44
— <i>multifida</i> Jadin	1945 p.43

<i>Amphiroa algeriensis</i> Kütz.	1943 p.18
— <i>Beauvoisii</i> Lamouroux	1943 p.17
— <i>crassa</i> Lamouroux forma minuta Web. v. Bosse	1943 p.19
— <i>echigoensis</i> Yendo	1943 p.18
— <i>elegans</i> Harv.	1943 p.20
— <i>exilis</i> Harv.	1943 p.18
— <i>fragilissima</i> (L.) Lamouroux	1943 p.17, 1950 p. 6
— <i>multifida</i> Kütz.	1943 p.21
— <i>polyzona</i> Mont.	1943 p.18
— <i>pustulata</i> Mert.	1943 p.17
— <i>zonata</i> Yendo	1943 p.18
<i>Anthamnon elegans</i> Berthold	1952 p.39
— <i>flagellatum</i> Børgs.	1945 p. 5
<i>Archaeolithothamnium Schmidtii</i> Fosl.	1954 p.14
<i>Asparagopsis Delilei</i> Mont.	1942 p.59
— <i>Sandfordiana</i> Harv.	1942 p.59, 1945 p.29
— <i>taxiformis</i> (Delile) Collins & Hervey 1942 p.59, 1945 p.29, 1951 p.38	
<i>Asterocytis ornata</i> (Ag.) Hamel	1942 p. 5
— <i>ramosa</i> Gobi.	1942 p. 5
<i>Batrachospermum attenuatum</i> Bonnem.	1945 p. 8
— <i>Requienii</i> Mont.	1951 p.15
<i>Bornetia Binderiana</i> (Sond.) Zan.	1945 p.16
<i>Bostrychia Moritziana</i> (Sond.) J.Ag.	1945 p.41
— <i>tenella</i> (Vahl) J.Ag.	1945 p.42
<i>Botryocladia Kuckuckii</i> (Web. v. Bosse) Yamada & Tanaka 1944 p.23, 1950 p.43	
— <i>Skottsbergii</i> (Børgs.) Levring	1950 p.42
<i>Callithamnion cordatum</i> Børgs.	1952 p.62
<i>Callymenia Morelii</i> Børgs.	1951 p.39, 1954 p.28
— <i>reniformis</i> (Turn.) J.Ag.	1951 p.40
<i>Caloglossa amboinensis</i> Jadin	1945 p.26
— <i>Hookeri</i> Hook. fil. & Harv.	1945 p.26
— <i>Leprieurii</i> (Mont.) J.Ag. var. <i>Hookeri</i> (Harv.) Post.	1945 p.26
<i>Carpopeltis rigida</i> (Harv. ex J. Ag.) Schmitz.	1943 p.27, 1950 p.12
<i>Caulacanthus divaricatus</i> (Suhr) Papenf.	1950 p.20
— <i>spinellus</i> Børgs.	1950 p.21
— <i>ustulatus</i> (Mert.) Kütz.	1950 p.19
<i>Centroceras bellum</i> Seth. & Gardn.	1953 p.50
— <i>clavulatum</i> (Ag.) Mont.	1945 p.10, 1953 p.50, p.51
— <i>leptacanthum</i> Kütz.	1953 p.52
<i>Ceramiella Huysmansii</i> (Web. v. Bosse) Børgs.	1953 p.47
<i>Ceramium byssoideum</i> Harv.	1952 p.42
— <i>Camoui</i> Dawson	1952 p.41
— <i>caudatum</i> Setch. & Gardn.	1945 p. 9
— <i>cingulatum</i> Web. v. Bosse	1953 p.51
— <i>Codii</i> (Richards) G. Mazoyer	1952 p.40, p.42

<i>Ceramium diaphanum</i> (Roth) Harv.	1952 p.46
— <i>diaphanum</i> forma <i>indicum</i> G. Feldm.	1952 p.48, p.51
— <i>elegans</i> Ducl.	1945 p.10
— <i>gracillimum</i> Griff. & Harv.	1945 p. 9, 1952 p.45
— — var. <i>byssoides</i> (Harv.) G. Mazoyer.	1952 p.42
— <i>Howei</i> Web. v. Bosse	1953 p.51
— <i>Huysmansii</i> Web. v. Bosse	1953 p.47
— <i>Johnstonii</i> Setch. & Gardn.	1952 p.46
— <i>Johnstonii</i> H. E. Petersen	1945 p.10, 1952 p.46
— <i>macrotrichum</i> G. Feldm.	1952 p.43
— <i>Maryae</i> Web. v. Bosse	1953 p.51
— <i>Masonii</i> Dawson	1952 p.46
— <i>mauritanum</i> G. Feldm.	1952 p.49
— <i>nodosum</i> Jadin.	1945 p.10
— <i>rubrum</i> (Huds.) Ag.	1945 p.10
— <i>Saviniae</i> G. Feldm.	1952 p.46
— <i>sinicola</i> Setch. & Gardn.	1952 p.46
— <i>strictum</i> Grev. & Harv.	1945 p. 9
— <i>transversale</i> Collins & Hervey	1945 p.9, 1952 p.43
<i>Ceramothamnion adriaticum</i> Schiller	1952 p.40
— <i>Codii</i> Richards	1952 p.40
<i>Champia compressa</i> Harv.	1944 p.30
— <i>compressa</i> Dickie	1944 p.30
— <i>Kotschyana</i> Jadin	1944 p.29
— <i>parvula</i> (Ag.) Harv.	1944 p.30, 1950 p.44, 1951 p.35, 1952 p.39, 1953 p.15
<i>Chantransia crassipes</i> Børgs.	1942 p. 8
<i>Chauvinia coriifolia</i> (Harv.) Kylin	1945 p.25
— <i>Jadinii</i> Børgs.	1945 p.23
<i>Cheilosporum acutilobum</i> Decsne	1943 p.19, 1950 p. 7
— <i>cultratum</i> (Harv.) Aresch.	1943 p.20
— <i>jungermannioides</i> Rupr.	1950 p.8, 1953 p.26
— <i>multifidum</i> (Kütz.) Yendo	1943 p.21
— <i>spectabile</i> Harv.	1943 p.21
<i>Chondria dasyphylla</i> (Woodw.) Ag.	1945 p.62, 1953 p.56
— <i>parvula</i> Ag.	1944 p.30
— <i>tenuissima</i> (Good. & Woodw.) Ag.	1945 p.62
<i>Chondriopsis dasyphylla</i> J.Ag.	1945 p.62
<i>Chondrococcus Hornemannii</i> (Lyngb.) Schmitz	1943 p.13
— <i>Hornemannii</i> Kylin.	1943 p.14
<i>Chondrus duriusculus</i> Kütz.	1953 p.46
— <i>multipartitus</i> (Clem.) Harv. β <i>foliifer</i> Grev. ex Harv. . .	1943 p.71
<i>Chrysmenia kuckuckii</i> Web. v. Bosse	1944 p.23, 1950 p.43
— <i>obovata</i> Jadin	1944 p.26, 1950 p.44
— <i>podagrica</i> (Harv.) Web. v. Bosse	1952 p.38
— <i>Skottbergii</i> Børgs.	1944 p.23, 1950 p.42
<i>Chylocladia podagrica</i> Harv.	1952 p.38

<i>Cladosiphon Frappieri</i> Mont. & Mill.	1942 p. 42
<i>Claudea multifida</i> Harv.	1952 p. 63
<i>Coelarthrum Albertisii</i> (Piccone) Børgs.	1944 p. 18
— <i>Boergesenii</i> Børgs.	1944 p. 18, 1952 p. 38
— <i>Mortensenii</i> Børgs.	1944 p. 19
— <i>Opuntia</i> (J. Ag.) Børgs.	1944 p. 19
<i>Coelothrix indica</i> Børgs.	
1944 p. 14, 1950 p. 40, 1951 p. 42, 1952 p. 38, 1953 p. 46	
— <i>irregularis</i> (Harv.) Børgs.	1944 p. 14
<i>Corallina cylindrica</i> Ellis & Solander	1942 p. 50
— <i>lapidescens</i> Ellis & Solander	1942 p. 46
— <i>mauritiana</i> Børgs.	1943 p. 22, 1950 p. 8
— <i>oblongata</i> Ellis & Solander	1942 p. 49
— <i>polydactyla</i> Mont. & Mill.	1943 p. 21, 1950 p. 8
— <i>plumifera</i> Kütz.	1943 p. 25
— <i>plumifera</i> Jadin	1943 p. 25
— <i>rosea</i> Lamarek.	1943 p. 24
— <i>rubens</i> L.	1943 p. 26
— <i>rugosa</i> Ellis & Solander	1942 p. 48
<i>Corallopsis Cacalia</i> Harv.	1943 p. 67, 1952 p. 34
— <i>Opuntia</i> J. Ag.	1943 p. 67, 1950 p. 24, 1951 p. 41, 1952 p. 33
— <i>reptans</i> Web. v. Bosse	1952 p. 34
<i>Crouania attenuata</i> (Bonnem.) J. Ag.	1945 p. 8
<i>Cryptonemia rigida</i> Harv. ex J. Ag.	1943 p. 27
<i>Dasya arbuscula</i> Jadin	1945 p. 28
— <i>elegans</i> (Martens) Ag.	1945 p. 28
— <i>pedicellata</i> Ag.	1945 p. 28
— <i>scoparia</i> Harv.	1945 p. 27
— <i>villosa</i> Harv.	1945 p. 28
<i>Delesseria coriifolia</i> Harv.	1945 p. 25
— <i>Leprieurii</i> Mont.	1945 p. 26
— <i>rhodantha</i> Harv.	1945 p. 43
— <i>ruscifolia</i> Jadin	1945 p. 23
<i>Dermonema</i> (Grev.) Harv.	1942 p. 21
<i>Dermonema amoenum</i> Pilger	1942 p. 26
— <i>dichotomum</i> Harv.	1942 p. 42
— <i>Frappieri</i> (Mont. & Mill.) Børgs.	1942 p. 42
— <i>gracile</i> Schmitz	1942 p. 42
<i>Desmia ambigua</i> Jadin	1943 p. 13
— <i>Hornemannii</i> (Mert. ex Lyngb.) Lyngb.	1943 p. 13, 1950 p. 6
— <i>tripinnata</i> (Her.) J. Ag.	1943 p. 14
<i>Dicranema filiforme</i> Sond.	1943 p. 39
<i>Dictymenia fraxinifolia</i> (Mert. ex Turn.) J. Ag.	1945 p. 46
<i>Dictyurus purpurascens</i> Bory.	1945 p. 30, 1954 p. 48
<i>Digenea simplex</i> (Wulfen) Ag.	1945 p. 39, 1953 p. 57
<i>Dumontia robusta</i> Grev.	1950 p. 13
<i>Echinocaulon acerosum</i> (Forssk.) Børgs.	1943 p. 5

Endosiphonia clavigera (Wolny) Falkenberg	1953 p.56
<i>Epineuron fraxinifolium</i> (Mert. ex Turn.) Harv.	1945 p.46
<i>Erythrocolan podagricum</i> (Harv.) J.Ag. f. minus Børgs.	1952 p.38
<i>Erythrotrichia carnea</i> (Dillw.) J.Ag.	1942 p.6
<i>Eucheuma chondriforme</i> J.Ag.	1943 p.51
— <i>Gelidium</i> J.Ag.	1943 p.52
— <i>horridum</i> (Harv.) J.Ag.	1943 p.44, 1950 p.15, 1951 p.40
— — <i>forma radicans</i> Børgs.	1943 p.46
— <i>jugatum</i> J.Ag.	1943 p.47, 1950 p.14
— <i>muricatum</i> Gmel.	1943 p.42, 1951 p.41
— <i>nodulosum</i> Aresch.	1943 p.44, 1950 p.15
— <i>odontophorum</i> Børgs.	1943 p.48
— <i>serra</i> J.Ag.	1943 p.43, 1950 p.14
— — <i>forma nodulosum</i> (Aresch.) Web. v. Bosse	1943 p.44
— <i>speciosum</i> (Sonder) J.Ag.	1953 p.35
— — <i>var. mauritianum</i> Børgs.	1943 p.49, 1953 p.28
— <i>spinosum</i> J.Ag.	1943 p.42
<i>Falkenbergia Hillebrandii</i> (Bornet) Falkenberg	1951 p.38
<i>Fauchea microspora</i> Bornet	1944 p.14
— (?) <i>mollis</i> Howe <i>var. intermedia</i> Web. v. Bosse.	1944 p.7
— <i>profunda</i> Børgs.	1944 p.11
— <i>repens</i> (Ag.) Mont.	1944 p.14
<i>Galaxaura breviarticulata</i> Kjellm.	1942 p.54, p.58, 1951 p.37, 1957 p.8
— <i>canaliculata</i> Dickie	1949 p.45
— <i>collabens</i> Kjellm.	1949 p.38
— <i>comans</i> Kjellm.	1942 p.58
— <i>constipata</i> Kjellm.	1949 p.44
— <i>corymbifera</i> Kjellm.	1942 p.56, p.58
— <i>cuculligera</i> Kjellm.	1949 p.40
— <i>cylindrica</i> (Ellis & Solander) Kjellm.	1942 p.50, p.57, 1949 p.44
— <i>dichotoma</i> Jadin	1942 p.49, p.50
— <i>fastigiata</i> Decsne	1949 p.42, p.45
— <i>insignis</i> Kjellm.	1942 p.57
— <i>lapidescens</i> Dickie, Børgs.	1942 p.46, p.57, 1949 p.39
— <i>marginata</i> Jadin	1942 p.54
— <i>mauritiana</i> Børgs.	1949 p.35, 1951 p.35
— <i>oblongata</i> (Ellis & Solander) Lamouroux	1942 p.49, p.57, 1949 p.41, 1951 p.36
— <i>obtusata</i> (Ellis & Solander) Lamouroux	1942 p.57, 1951 p.37
— <i>occidentalis</i> Børgs.	1949 p.45
— <i>Pikeana</i> Dickie	1943 p.31
— <i>pilifera</i> Kjellm.	1942 p.51, p.58, 1949 p.44
— <i>rugosa</i> (Ellis & Solander) Lamouroux	1942 p.48, p.58, 1949 p.39, p.40
— <i>rugosa</i> Jadin p. p.	1942 p.54
— <i>Schimperi</i> Decsne	1942 p.50

Galaxaura squalida Kjellm.	1949 p.40
— subverticillata Kjellm.	1942 p.48, p.58
— tenera Kjellm.	1942 p.52, p.58, 1949 p.45
— umbellata (Esper) Lamouroux	1951 p.37
— veprecula Kjellm.	1942 p.54, p.58, 1949 p.45
Gelidiella acerosa (Forssk.) Feldm. & Hamel	
1943 p.5, 1950 p.5, 1951 p.38, 1952 p.24, 1953 p.25	
Gelidiopsis acrocarpa (Harv.) Schmitz	1954 p.18, 1957:
the foot-note on this page	
— intricata (Ag.) Vickers	1943 p.53
— scoparia Børgs. ¹	1952 p.26, 1953 p.36, 1954 p.22
— variabilis (Grev.) Schmitz	1950 p.15
<i>Gelidium acrocarpum</i> Harv.	1954 p.18
— biserratum Børgs.	1943 p. 8
— cartilagineum (L.) Gaill.	1943 p. 7
— corneum Jadin	1943 p. 7
— crinale (Turn.) Lamouroux	1943 p. 7
— intricatum (Ag.) Kütz.	1943 p.53
— micropterum Kütz.	1943 p. 7
— pulvinatum (Ag.) Thur. in Bornet	1943 p. 6
— pusillum (Stackh.) Le Jolis	1943 p.5, 1952 p.25
— — var. minusculum Web. v. Bosse	1943 p. 6
— — var. pulvinatum (Ag.) Feldm.	1943 p.6, 1950 p. 6
— ramelliferum Kütz.	1943 p. 5
— repens Kütz.	1954 p.19
— reptans (Suhr) Kylin	1943 p. 6
— rigidum Kütz.	1943 p. 8
— rigidum Jadin	1943 p. 5
— samoense Reinb.	1954 p.21
— subcostatum Okamura	1943 p.10
— variabile (Grev. ex J.Ag.) J. Ag.	1950 p.15, 1954 p.21
Gigartina flagelliformis Sond.	1943 p.41
— horrida (Ag.) Grev.	1943 p.62, 1953 p.56
— horrida Harv.	1943 p.44
— miniata (Drap.) Lamouroux	1950 p.39
— ornata Kütz.	1943 p.49
— speciosa Sond.	1943 p.49
Gloioderma (?) expansum Web. v. Bosse	1944 p. 8
— fruticulosum (Harv.) De Toni	1944 p. 8
— halymenioides (Harv.) De Toni	1944 p. 8
— mauritianum Børgs.	1944 p. 8

¹ Occasioned by a letter from Dr. Y. YAMADA, Hokkaido, Japan, in which he writes that in Formosa he has collected some specimens quite like those which I have named *Gelidiopsis scoparia*, but which he has determined to be *Gelidiopsis acrocarpa*, I have again taken up the question and have arrived at the result that I surely have made a mistake here: The specimens I have determined as *Gelidiopsis scoparia* (Mont. & Mill.) Schmitz in the parts referred to above, are not this species, but are referable to *Gelidiopsis acrocarpa* (Harv.) Schmitz.

<i>Gloioderma Robillardii</i> Børgs.	1944 p. 5
<i>Goniotrichum elegans</i> (Chauv.) Le Jolis.	1942 p. 5
<i>Gracilaria arcuata</i> Zan.	1950 p. 38
— — var. <i>Snackeyi</i> Web. v. Bosse 1943 p.69, 1950 p.38, 1952 p.35	
— — — forma <i>rhizophora</i> Børgs.	1943 p.71
— <i>confervoides</i> (L.) Grev.	1950 p.32, p.36
— <i>corticata</i> J.Ag.	1943 p.71
— <i>crassa</i> Harv. ex J.Ag.	1943 p.67, 1950 p.24, 1952 p.33
— — forma <i>conglomerata</i> Børgs.	1952 p.34
— <i>crispata</i> Setch. & Gardn.	1950 p.36
— <i>debilis</i> Børgs.	1943 p.71
— <i>denticulata</i> ? Web. v. Bosse	1943 p.75
— <i>denticulata</i> Børgs.	1943 p.76, 1950 p.28
— <i>dumosa</i> Harv.	1952 p.36
— <i>dura</i> (Ag.) J.Ag.	1951 p.41, 1953 p.41, 1954 p.33
— <i>foliifera</i> (Forssk.) Børgs.	1943 p.71
— <i>lacerata</i> Setch. & Gardn.	1950 p.37
— <i>lichenoides</i> (L.) J.Ag.	1943 p.68
— <i>Millardetii</i> (Mont.) J.Ag.	1943 p.72, 1950 p.26, 1953 p.42
— — forma <i>crenulata</i> J.Ag.	1943 p.74, 1950 p.27
— — forma <i>exposita</i> Børgs.	1950 p.26
— — forma <i>latifolia</i> Børgs.	1950 p.28
— — forma <i>linearifolia</i> J.Ag.	1943 p.74, 1950 p.27
— — forma <i>Millardetii</i> Børgs.	1943 p.73, 1950 p.26
— <i>multifurcata</i> Børgs.	1953 p.42
— <i>Protea</i> J.Ag.	1950 p.36
— <i>purpurascens</i> (Harv.) J.Ag.	1950 p.36
— <i>pygmaea</i> Børgs.	1943 p.75
— <i>radicans</i> Jadin	1943 p.70
— <i>robusta</i> Sjöstedt	1950 p.28
— <i>Sjoestedtii</i> Kylin	1950 p.29
— <i>spinuligera</i> Børgs.	1952 p.31
<i>Gracilariopsis dumosa</i> (Harv.) Børgs.	1952 p.36
— <i>Sjoestedtii</i> (Kylin) Dawson	1950 p.29
<i>Grateloupia filicina</i> (Wulfen) Ag.	1943 p.27, 1953 p.27
— <i>opposita</i> Kütz.	1950 p.14
<i>Griffithsia Argus</i> Mont.	1945 p.18
— <i>Binderiana</i> Sond.	1945 p.16
— <i>japonica</i> Okamura	1953 p.54
— <i>opuntioides</i> J.Ag.	1945 p.17
— <i>penicillata</i> Ag.	1945 p.18
— <i>Schousboei</i> Mont.	1953 p.54
— <i>secunda</i> Dickie	1945 p.17
— <i>subcylindrica</i> Okamura	1953 p.53, 1954 p.35
— <i>tenuis</i> Ag.	1945 p.17
— <i>Weber-van-Bosseae</i> Børgs.	1945 p.17, 1953 p.53
<i>Gymnogongrus corymbosus</i> J.Ag.	1953 p.46

Gymnogongrus spec.	1953 p.44
<i>Gymnophloea gracilis</i> Martens.	1942 p.42
Halarachnion calcareum Okamura	1943 p.39
Halodictyon mirabile Zan.	1954 p.49
— spec.	1954 p.49
Haloplegma africanum Kütz.	1945 p.15, 1952 p.52
— Duperreyi Mont.	1945 p.11, 1952 p.52
— — subspec. spinulosum Howe	1945 p.14
— <i>Preissii</i> Jadin	1945 p.13
Halymenia maculata J.Ag.	1943 p.27, 1950 p.9
— <i>Pikeana</i> J.Ag.	1943 p.31
— <i>seticulosa</i> J.Ag.	1943 p.56
<i>Helminthocladia Cassei</i> Crouan in Mazé & Schramm nom. nud.	1942 p.18
Herposiphonia secunda (Ag.) Ambr.	1945 p.40
— tenella (Ag.) Ambr.	1945 p.40
<i>Heteroderma mauritianum</i> Foslie	1943 p.17
Hildenbrandia prototypus Nardo	1943 p.15
Hypnea Boergesenii Tanaka.	1954 p.25
— bryoides Børgs.	1943 p.59
— Cenomyce J. Ag.	1950 p.17
— charoides Lamouroux.	1943 p.56, 1950 p.16
— — var. indica Web. v. Bosse	1943 p.56
— chordacea Kütz.	1954 p.23
— <i>cornuta</i> (Lamouroux) J. Ag.	1943 p.59
— <i>divaricata</i> Dickie	1943 p.58
— <i>Esperi</i> Bory	1950 p.16
— <i>hamulosa</i> (Turn.) Mont	1943 p.59
— <i>Harveyi</i> Kütz.	1943 p.55, 1954 p.25
— (?) <i>horrída</i> (Ag.) J. Ag. 1943 p.46, p.62, 1950 p.18, 1952 p.28, 1953 p.56	
— musciformis (Wulfen) Lamouroux	1943 p.54, 1954 p.26
— — λ <i>cornuta</i> Harv.	1943 p.61
— — β <i>ramulosa</i> Harv.	1943 p.57
— — γ <i>Valentiae</i> (Turn.) Harv.	1943 p.58
— nidulans Setch.	1943 p.62, 1950 p.17, 1952 p.25, p.27
— <i>nigrescens</i> Jadin	1943 p.27
— <i>pannosa</i> J. Ag.	1943 p.61
— <i>pannosa</i> Harv.	1943 p.62, 1950 p.17
— (?) <i>pectinella</i> Børgs.	1954 p.26
— <i>spicifera</i> (Suhr) Harv.	1943 p.55, 1954 p.24
— <i>spicigera</i> Jadin	1943 p.56
— <i>spinella</i> Jadin	1943 p.54
— <i>Valentiae</i> (Turn.) Mont.	1943 p.58, 1950 p.16
Hypoglossum Woodwardii Kütz.	1945 p.25
Jania adhaerens Lamouroux	1953 p.27
— <i>Cuvieri</i> (Lamouroux) Decsne "natalensis" Aresch.	1943 p.25
— <i>rosea</i> (Lamarck) Decsne	1943 p.25

<i>Jania rubens</i> (L.) Lamouroux.....	1943 p.26
— <i>tenella</i> Kütz.....	1943 p.26, 1950 p.9, 1954 p.15
<i>Kallymenia perforata</i> J. Ag.....	1943 p.29
<i>Laurencia columellaris</i> Børgs.....	1945 p.53
— <i>corymbifera</i> Jadin.....	1945 p.59
— <i>decumbens</i> Kütz.?.....	1945 p.50, 1952 p.65, 1954 p.46
— <i>distichophylla</i> J. Ag. ?.....	1952 p.65
— <i>divaricata</i> J. Ag.....	1945 p.60, 1954 p.47
— <i>elegans</i> Lucas.....	1945 p.50
— <i>flexilis</i> Setch... 1945 p.56, p.59, 1952 p.66, 1953 p.55, 1954 p.46	
— <i>natalensis</i> Kylin.....	1945 p.59
— <i>nidifica</i> J. Ag.....	1945 p.47, 1952 p.64
— <i>obtusa</i> (Huds.) Lamouroux.....	1945 p.58
— — var. <i>divaricata</i> (J. Ag.) Yam.....	1945 p.60, 1954 p.47
— — (?) var. <i>nana</i> Harv.....	1945 p.48
— — var. <i>natalensis</i> (Kylin) Børgs.....	1945 p.59, 1952 p.67
— — var. <i>rigidula</i> Grunow.....	1945 p.58
— <i>obtusa</i> Jadin.....	1945 p.48
— <i>papillosa</i> (Forssk.) Grev.....	1945 p.47, 1952 p.64, 1954 p.46
— <i>perforata</i> (Bory) Mont.....	1945 p.50
— <i>perforata</i> Jadin.....	1945 p.53
— <i>subcolumnaris</i> Børgs.....	1957 p.12
— <i>tropica</i> Yam.....	1945 p.54, 1952 p.66
— <i>verruculosa</i> Børgs.....	1957 p.12
<i>Lejolisia mediterranea</i> Bornet.....	1952 p.57
<i>Leveillea jungermannii</i> (Martens & Her.) Harv.....	1945 p.42, 1954 p.47
<i>Liagora bella</i> Børgs.....	1953 p.21
— <i>Caenomyce</i> Decsne.....	1942 p.32
— <i>ceranoides</i> Lamouroux forma <i>leprosa</i> (J. Ag.) Yam.....	1942 p.28, 1949 p.32
— — forma <i>pulverulenta</i> (Ag.) Yam.....	1942 p.28, 1951 p.27
— <i>cladonioides</i> Børgs.....	1942 p.38
— <i>coarctata</i> Dickie.....	1942 p.34, 1949 p.32
— <i>crassa</i> Dickie.....	1942 p.37, 1949 p.34
— <i>decussata</i> Mont.....	1951 p.26
— <i>distenta</i> Jadin.....	1942 p.28
— <i>dubia</i> (Bory) Bornet.....	1942 p.41
— <i>elongata</i> Zan.....	1942 p.36
— <i>farinosa</i> Lamouroux.....	1942 p.36, 1949 p.33, 1951 p.31
— <i>formosana</i> Yam.....	1951 p.34
— <i>fragilis</i> Zan.....	1949 p.29
— <i>fragilis</i> Børgs.....	1942 p.37, 1949 p.28
— <i>galaxauroides</i> Dickie.....	1949 p.29
— <i>Holstii</i> Zeh.....	1942 p.31
— <i>Jadinii</i> Børgs.....	1942 p.29, 1949 p.29
— <i>leprosa</i> J. Ag.....	1942 p.28

<i>Liagora lurida</i> Dickie	1942 p.37, 1949 p.34
— <i>lurida</i> Børgs.	1942 p.40, 1949 p.34, 1951 p.32
— <i>mauritiana</i> Børgs.	1942 p.32, 1951 p.27, 1952 p.23
— <i>mucosissima</i> Yam.	1951 p.34
— <i>obtusa</i> Dickie	1949 p.32
— <i>pectinata</i> Collins & Hervey	1942 p.41, 1951 p.34
— <i>Pikeana</i> Børgs.	1951 p.32
— <i>pinnata</i> Harv.	1949 p.32, 1953 p.19
— <i>pulverulenta</i> Ag.	1942 p.28
— <i>pulverulenta</i> Dickie	1949 p.34
— <i>rugosa</i> Zan. 1942 p.30, 1949 p.28, 1952 p.21, 1953 p.19, 1954 p.12	
— <i>valida</i> Harv.	1949 p.26, 1951 p.31, 1953 p.20
— <i>Vaughanii</i> Børgs.	1951 p.29
<i>Lithophyllum incrassatum</i> Fosl.	1943 p.16
— <i>incrassatum</i> Phil.	1943 p.16
— <i>Kaiseri</i> (Heydr.) Heydr.	1954 p.14
— <i>moluccense</i> Fosl. forma <i>pygmaeum</i> (Heydr.) Fosl.	1954 p.13
— — forma <i>torquescens</i> (Fosl.) Fosl.	1954 p.13
— <i>onkodes</i> Heydr.	1943 p.16
— <i>pygmaeum</i> (Heydr.) Heydr.	1954 p.13
— <i>torquescens</i> Fosl.	1954 p.13
<i>Lithothamnion incrustans</i> (Phil.) Fosl.	1943 p.16
— <i>Lenormandii</i> (Aresch.) Fosl.	1943 p.16
— <i>simulans</i> Fosl. forma <i>crispescens</i> Fosl.	1954 p.14
<i>Lomentaria corallicola</i> Børgs.	1944 p.27
— <i>mauritiana</i> Børgs.	1944 p.27
<i>Lophosiphonia sparsa</i> Setch.	1945 p.39
<i>Martensia elegans</i> Her.	1945 p.27, 1952 p.63, 1953 p.55
<i>Melobesia farinosa</i> Lamouroux.	1943 p.16
— <i>Lenormandii</i> Aresch.	1943 p.16
— <i>mauritiana</i> (Fosl.) Lemoine	1943 p.17
<i>Meristotheca papulosa</i> J.Ag.	1954 p.29
— <i>tasmanica</i> J.Ag.	1943 p.12, 1944 p.8
<i>Mesophyllum crispescens</i> (Fosl.) Lemoine	1954 p.14
<i>Murrayella pericladus</i> (Ag.) Schmitz	1945 p.41
<i>Mychodea Chaemaedoridis</i> Børgs.	1943 p.77
— <i>hamata</i> J.Ag.	1943 p.78
<i>Myriocladia capensis</i> Dickie	1951 p.21
<i>Nemalion amoenum</i> (Pilger) Børgs.	1942 p.27
— <i>multifidum</i> (Web. & Mohr) J.Ag.	1942 p.24
— <i>perpusillum</i> Børgs.	1942 p.19
— <i>pulvinatum</i> Grunow	1942 p.25
— <i>virens</i> J.Ag.	1942 p.27
<i>Nemastoma coliforme</i> J.Ag.	1943 p.30
<i>Neurymenia fraxinifolia</i> (Mert. ex Turn.) J.Ag.	1945 p.46
<i>Pachycarpus Morelii</i> Børgs.	1951 p.39, 1954 p.29
<i>Peyssonelia Gunniana</i> J.Ag.	1943 p.14

<i>Phacelocarpus tortuosus</i> Endl. & Dies.	1952 p.29
— <i>tristichus</i> J.Ag.	1943 p.65, 1952 p.28
<i>Phyllophora Brodiaei</i> (Turn.) J. Ag.	1954 p.35
— <i>Maillardii</i> Mont. & Mill.	1943 p.27
— <i>Morinii</i> Børgs.	1954 p.33
— <i>reptans</i> Suhr.	1943 p. 6
<i>Platoma Pikeanum</i> Web. b. Bosse	1943 p.31
<i>Plocamium cincinnatum</i> Kütz.	1943 p.14
— <i>cornutum</i> (Turn.) Harv.	1943 p.64, 1953 p.36
— <i>Telfairiae</i> Harv. ex Kütz.	1943 p.64, 1953 p.36
<i>Polysiphonia corymbosa</i> Dickie.	1945 p.36
— <i>fastigiata</i> (Roth) Grev.	1954 p.43
— <i>ferulacea</i> Suhr ex J.Ag.	1945 p.34
— <i>ferulacea</i> Yendo.	1954 p.38
— <i>mollis</i> Hook. fil. & Harv.	1945 p.30
— <i>Moritziana</i> Sond. ex Kütz.	1945 p.41
— <i>nigrescens</i> (Smith) Grev.	1954 p.43
— — <i>forma protensa</i> J.Ag.	1954 p.43
— <i>platycarpa</i> Børgs.	1945 p.33, p.34
— <i>pulvinata</i> Jadin.	1945 p.34
— <i>scopulorum</i> Harv. ?	1954 p.37
— <i>secunda</i> (Ag.) Zan.	1945 p.40
— <i>subtilissima</i> Mont.	1954 p.36, p.38
— <i>tenella</i> (Ag.) J.Ag.	1945 p.40
— <i>tongatensis</i> Harv.	1954 p.38
— <i>variegata</i> (Ag.) Zan.	1945 p.35, 1954 p.41
— <i>spec.</i>	1945 p.36
<i>Polyzonia jungermannioides</i> (Martens & Her.) J. Ag.	1945 p.42
<i>Porolithon onkodes</i> (Heydr.) Fosl.	1943 p.16
<i>Porphyra leucosticta</i> Thur.	1942 p. 7
— <i>tenera</i> Kjellm. ?	1942 p. 6
— <i>umbilicalis</i> forma <i>purpurea</i> Jadin.	1942 p. 7
<i>Rhabdonia natalensis</i> Reinb. in Tyson.	1943 p.40
— <i>robusta</i> J.Ag.	1950 p.13
<i>Rhodymenia Millardetii</i> Mont.	1943 p.72, 1944 p.26
— <i>purpurascens</i> Harv.	1950 p.36
— <i>tripinnata</i> Her. in Krauss.	1943 p.14
<i>Roschera condensata</i> Web. v. Bosse.	1953 p.58
— <i>glomerulata</i> (Ag.) Web. v. Bosse.	1952 p.69, 1953 p.59
<i>Sarcodia ceylanica</i> Harv. 1943 p.66, 1950 p.21, 1952 p.31, 1954 p.28	
— — var. <i>mauritiana</i> Børgs.	1953 p.37, 1954 p.28
— <i>ceylonensis</i> (J.Ag.) Kylin.	1950 p.21
— <i>Gattyae</i> (J.Ag.) Kylin.	1943 p.67, 1950 p.21, 1952 p.30
— <i>mauritiana</i> Børgs.	1952 p.29, 1954 p.28
— <i>Montagneana</i> J.Ag. 1943 p.67, 1950 p.22, 1952 p.30, 1954 p.28	
— <i>multifida</i> Børgs.	1953 p.39, 1954 p.30
<i>Sarconema capense</i> J.Ag.	1954 p.29

Sarconema filiforme (Sond.) Kylin..	1943 p.39, 1950 p.13, 1952 p.26
— indicum (J.Ag.) Kylin.....	1950 p.13
— palmatum J.Ag.	1954 p.29
Schizymenia pacifica (Kylin) Kylin	1943 p.36
<i>Solieria australis</i> Harv.	1950 p.13
— chordalis (Ag.) J.Ag.	1943 p.41
— natalensis (Reinb.) Børgs.....	1943 p.40
— robusta (Grev.) Kylin forma flagelliformis J.Ag.	1950 p.13
Spermothamnion Cymodoceae Børgs.....	1952 p.54
— repens (Dillw.) Rosenv.....	1952 p.57
<i>Sphaerococcus angustifolius</i> Kütz.	1954 p.20
— denticulatus Kütz.....	1943 p.75, p.76
— durus Ag.	1951 p.41
— horridus Ag.....	1943 p.46, p.62, 1953 p.56
— intricatus Ag.....	1943 p.53
— Sonderi Klütz.....	1951 p.41
— vittatus Ag.....	1943 p.11
Spyridia filamentosa (Wulfen) Harv. 1945 p.11, 1952 p.52, 1953 p.52	
Suhria pristoides (Turn.) J.Ag.	1943 p. 6
— vittata (L.) J.Ag.	1943 p.11
— vittata Jadin.....	1943 p.12, 1944 p.11
— (?) <i>Zollingeri</i> (Sond.) Grunow.....	1943 p.27
Tenaciphyllum lobatum Børgs.	1953 p.29, 1954 p.17
— rotundilobum Børgs.	1953 p.32, 1954 p.17
<i>Thamnocarpus cornutus</i> (Turn.) Kütz.	1943 p.64
<i>Thamnophora Telfairiae</i> Harv.....	1943 p.64
Titanophora mauritiana Børgs.	1957 p. 9
— Pikeana (Dickie) Feldm.....	1950 p.12
— Pikeana (Dickie) Børgs.....	1943 p.31, 1950 p.12
— Weberae Børgs.....	1943 p.39
Trematocarpus elongatus Kütz.....	1943 p.41
Trichogloea Herveyi Taylor	1952 p.19
— Jadinii Børgs.	1951 p.18, 1952 p.21
— javensis Børgs.	1951 p.25
— lubrica Okamura.....	1952 p.21
— lubrica Jadin.....	1942 p.17, 1951 p.18
— Papenfussii Tanaka	1952 p.21
— Requierii (Mont.) Kütz.	1951 p.15, 1952 p.16
— Requierii Børgs.	1942 p.17, 1951 p.18
— spec.	1951 p.21, 1952 p.20
<i>Turnerella pacifica</i> Kylin.....	1943 p.36
Vanvoorstia spectabilis Harv.	1945 p.26
<i>Veprecula clavigera</i> Wolny	1953 p.56
Vidalia fimbriata (R. Br. ex Turn.) J.Ag.	1945 p.44, 1954 p.47
— — var. neocaledonica Grunow ex Falkenberg 1945 p. 44, 1957 p.12	
— <i>Melvillii</i> (J.Ag.) Schmitz	1945 p.44
— <i>obtusifolia</i> Bornet	1945 p.44

Wrangelia Argus Mont.	1945 p.18, 1952 p.59
— penicillata (Ag.) Ag.	1945 p.18, 1952 p.59
— plebeja J.Ag.	1945 p.18
— plebeja Jadin p.p.	1945 p.18
Wurdemannia miniata (Drap. ex DC.) Feldm. & Hamel	
	1950 p.39, 1952 p.25, 1953 p.15
— setacea Harv.	1950 p.39

Phycomycetes.

Species parasiticae	1952 p.49, p.51
---------------------------	-----------------

A map of Mauritius is found at the end of the 1948 part.

Det Kongelige Danske Videnskabernes Selskab

Biologiske Meddelelser
(Biol. Medd. Dan. Vid. Selsk.)

Bind 21 (kr. 67.00)

kr. ø.

1. BÖCHER, TYGE W.: Studies on the Sapropelic Flora of the Lake Flyndersø with Special Reference to the Oscillatoriaceae. 1949 4.00
2. JENSEN, P. BOYSEN: The Production of Matter in Agricultural Plants and its Limitation. 1949 2.00
3. JENSEN, P. BOYSEN: Causal Plant-Geography. 1949 2.00
4. LARSEN, ELLINOR BRO: Activity and Migration of *Plusia Gamma* L. Studies on the Activity of Insects III. 1949 3.00
5. BØRGESEN, F.: Some Marine Algae from Mauritius. Additions to the Parts Previously Published. 1949 6.00
6. JENSEN, AD. S., and VOLSØE, HELGE: A Revision of the Genus *Icelus (Cottidae)*. With Remarks on the Structure of its Urogenital Papilla. 1949. 3.00
7. BUCHTHAL, FRITZ, and KAISER, E.: The Rheology of the Cross Striated Muscle Fibre with Particular Reference to Isotonic Conditions. In Collaboration with POUL ROSENFALCK. 1951... 35.00
8. HELBAEK, HANS: Queen Ichetis' Wheat. A Contribution to the Study of Early Dynastic Emmer of Egypt. 1953 3.00
9. BØRGESEN, F.: Some Marine Algae from Mauritius. Additions to the Parts Previously Published. V. 1953 9.00

Bind 22 (kr. 65.00)

1. JENSEN, P. BOYSEN: Untersuchungen über Determination und Differenzierung. 2. Über die Wachstumsvorgänge in der Spitze der Wurzelhaare von *Phleum*. With an English Summary. 1954 3.50
2. BÖVING, ADAM G.: Mature Larvae of the Beetle-Family Anobiidae. 1954. 35.00
3. GAMOW, G.: Possible Mathematical Relation between Deoxyribonucleic Acid and Proteins. 1954 2.00
4. BØRGESEN, F.: Some Marine Algae from Mauritius. Additions to the Parts Previously Published. VI. 1954 8.00
5. JENSEN, P. BOYSEN: Untersuchungen über Determination und Differenzierung. 3. Über die Wirkungsweise des determinierenden Faktors, der bei der Bildung der Wurzelhaare von *Lepidium*, *Sinapis* und *Phleum* tätig ist. With an English Summary. 1955 4.50
6. SALOMONSEN, FINN: The Evolutionary Significance of Bird-Migration. 1955. 6.00
7. MUNCH-PETERSEN, AGNETE, KALCKAR, HERMAN M., and SMITH, EVELYN E. B.: Uridyl Transferases, their Occurrence and Physiological Role. 1955 3.00

	kr. ø.
8. GAMOW, G.: On Information Transfer from Nucleic Acids to Proteins. 1955.....	1.00
9. HEVESY, G.: Conservation of Skeletal Calcium Atoms through Life. 1955.....	2.00

Bind 23

(uafsluttet/in preparation)

1. RASMUSSEN, ERIK: Faunistic and Biological Notes on Marine Invertebrates III. The Reproduction and Larval Development of some Polychaetes from the Isefjord, with some Faunistic Notes. 1956.....	11.00
2. PETERSEN, JOHS. BOYE, and HANSEN, J. BENTH: On the Scales of some Synura Species. 1956.....	7.00
3. BRØNDSTED, H. V.: Experiments on the Time-Graded Regeneration Field in Planarians. With a Discussion of its Morphogenetic Significance. 1956.....	7.00
4. † BØRGESSEN, F.: Some Marine Algae from Mauritius. Final Part. Edited by TYGE CHRISTENSEN. 1957.....	5.00

On direct application to the agent of the Academy: EJNAR MUNKS-GAARD, Publishers, 6 Nørregade, København K, a subscription may be taken out to the series of *Biologiske Meddelelser*. This subscription is comprising automatically *Biologiske Skrifter* in 4to. The *Meddelelser* and the *Skrifter* only differ in size, not at all in the subjects treated. Papers with large formulae, tables, plates etc. will generally be published in the *Skrifter* in 4to. Since it is due to a mere accident, with regard to the subjects treated, if a paper is printed in *Meddelelser* in 8vo or in *Skrifter* in 4to, these two series will be sent together automatically to all subscribers to the biological papers of the Academy.

For subscribers and others who want to receive only the publications concerning a single group of subjects, there is a possibility of special arrangement with the agent of the Academy, in order to acquire the papers published under one or more of the subjects: *Botany*, *Zoology*, *General Biology*.

In order to avoid mistakes at registration and quotation the publications will not have any special designation of the group of subjects printed on them; but on the cover of each paper there will be a list of the papers last published within the same group of subjects as that to which the number in question belongs.

The last published numbers of *Biologiske Meddelelser* within the group of *Botany* are the following:

Vol. 21, No. 1, 2, 3, 5, 8, 9. — Vol. 22, No. 1, 4, 5. — Vol. 23, No. 2, 4.